

16

WARNING
Electrical Shock
Hazardous Voltage
Do Not Touch
When Power is On

CAUTION
ATTENTION

Yellow indicator light
Green indicator light
Red indicator light
Yellow indicator light

TOTEM
Cable
PL-Cable Wiring
PL-Lane Wiring
MCA-Pump
OS-Max Gas
2012



NOTICE





TOT-YAN
2-3N911

POWER ●
STB ●

ERRAT Stop Stop Alarm Clear


ESC	↑	↓	←	→	STOP
1	2	3	4	5	6
7	8	9	0	ENTER	STOP
STOP	STOP	STOP	STOP	STOP	STOP

- PORT
- MOD
- NET A
- NET B

 Allen-Bradley

PowerFlex
700

Tot-Yan

POWER 

STS 

F-Net Enabled | Auto
RPM
Amps
Bus VDC

Allen-Bradley

SMART View Lang Auto / Man Remove

Esc Sel   

 7 8 9 

 4 5 6 Jog

 1 2 3 

ALT Exp 0 +/-  Param #

 Allen-Bradley

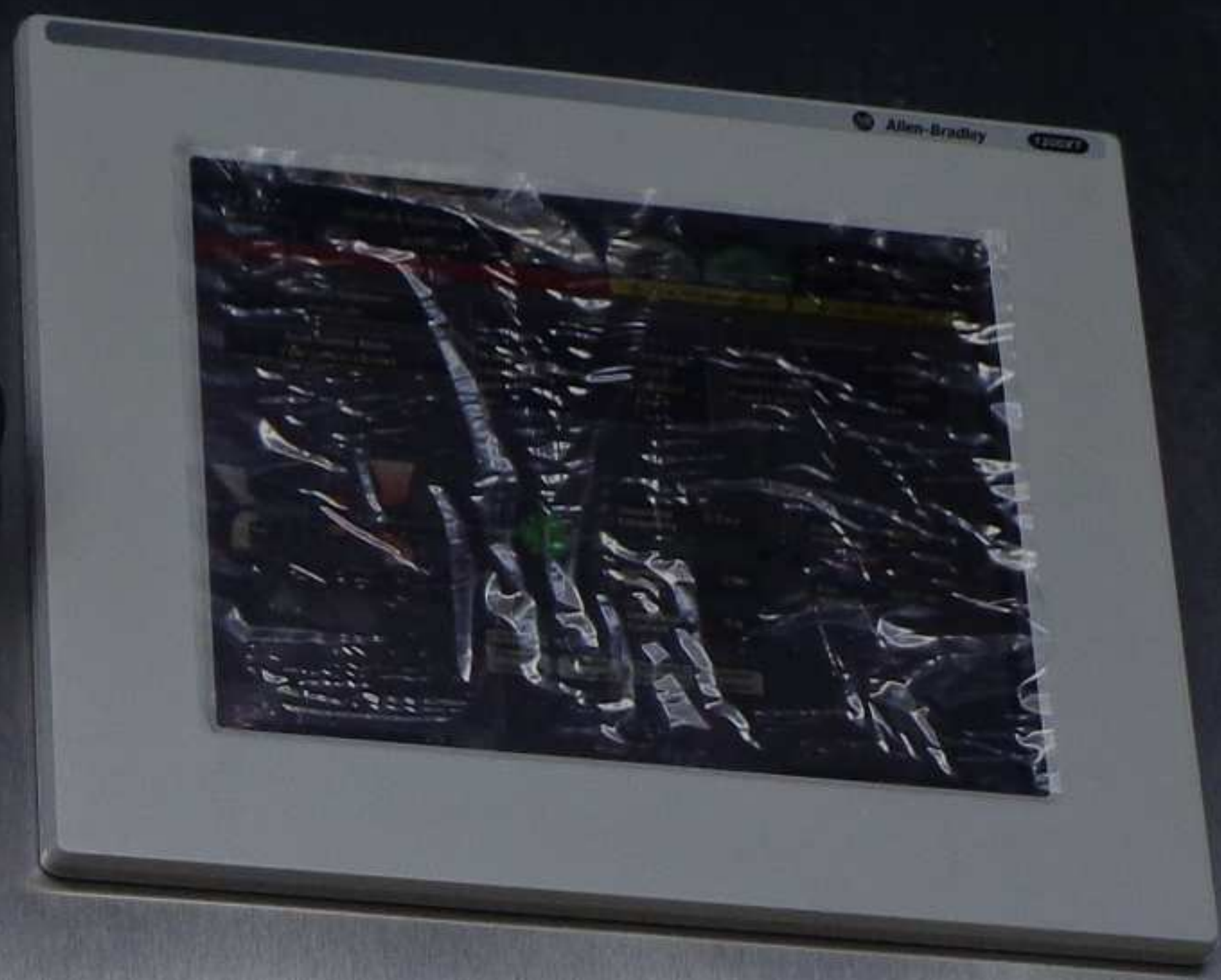
-  PORT
-  MOD
-  NET A
-  NET B

PowerFlex
700

 CAUTION
HOT SURFACES CAN CAUSE SEVERE BURNS




CAUTION
SERVICE BY AUTHORIZED
PERSONNEL ONLY
DISCONNECT POWER
BEFORE SERVICING
ATTENTION
L'ENTRETIEN DOIT ÊTRE EFFECTUÉ
UNIQUEMENT PAR LE PERSONNEL
AUTORISÉ. DÉCONNECTER
L'ALIMENTATION ÉLECTRIQUE AVANT
L'INTERVENTION



- FIRE SYSTEM AUTO**
SYSTÈME D'INCENDIE AUTO

- FIRE SYSTEM MANUAL**
SYSTÈME D'INCENDIE MANUEL

- FIRE SYSTEM DISCHARGE**
SYSTÈME D'INCENDIE DÉCHARGE

- FIRE SYSTEM AUTO / INHIBIT**
SYSTÈME D'INCENDIE AUTO / INHIBITION

- FIRE SYSTEM MANUAL RELEASE**
DÉGAGEMENT MANUEL


- HORN SILENCE**
ARRÊT SIRÈNE

- ACKNOWLEDGE**
ACQUITTÉMENT

- RESET**
REARMEMENT

- SPEED DECREASE INCREASE**
VITESSE BAISSER AUGMENTER

- VOLTAGE DECREASE INCREASE**
TENSION BAISSER AUGMENTER

- START/STARTING**
DÉMARRAGE / EN DÉMARRAGE

- STOP/STOPPING**
ARRÊT / EN SÉQUENCE D'ARRÊT

- BACKUP SYSTEM ACTIVE/RESET**
SYSTÈME DE SÉCURITÉ EN SERVICE/REARMEMENT

- EMERGENCY STOP**
ARRÊT D'URGENCE




1072348-001
DC VOLTS
ELECTRONIC ACTUATOR
POWER

Read and follow precautions in the Large Enclosure Safe Handling Requirements that accompanied the enclosure. It is also available at hoffmannonline.com/safehandling.

- Do not transport using pallet and slats. These slats are only for trailer loading and unloading.
- Stabilize the enclosure before removing strapping.
- This Warning may be repositioned only after the enclosure has been permanently installed.

Read and follow precautions in the Large Enclosure Safe Handling Requirements that accompanied the enclosure. It is also available at hoffmannonline.com/safehandling.

- Do not transport using pallet and slats. These slats are only for trailer loading and unloading.
- Stabilize the enclosure before removing strapping.
- This Warning may be repositioned only after the enclosure has been permanently installed.



CAUTION
SERVICE BY AUTHORIZED PERSONNEL ONLY. DISCONNECT POWER BEFORE SERVICING.

ATTENTION
L'ENTRETIEN DOIT ÊTRE EFFECTUÉ UNIQUEMENT PAR LE PERSONNEL AUTORISÉ. DÉCONNECTER L'ALIMENTATION ÉLECTRIQUE AVANT DE PROCÉDER À L'INTERVENTION.



THE SYSTEM
SYSTEME
AUTO

THE SYSTEM
SYSTEME
MANUAL

THE SYSTEM
SYSTEME
MANUAL

THE SYSTEM
SYSTEME
MANUAL

THE SYSTEM
SYSTEME
MANUAL

THE SYSTEM
SYSTEME
MANUAL

THE SYSTEM
SYSTEME
MANUAL

THE SYSTEM
SYSTEME
MANUAL

STOP/STOPPING
ARRÊT/ARRÊT

ACKNOWLEDGE
ACQUITTEMENT

RESET
RÉARMEMENT

VOLTS INCREASE
TENSION AUGMENTÉE

VOLTS DECREASE
TENSION DIMINUÉE

START/STARTING
DÉMARRAGE EN DÉMARRAGE

STOP/STOPPING
ARRÊT/ARRÊT

BACKUP SYSTEM
ACTUELS
SYSTEME DE SÉCURITÉ
EN SÉCURITÉ D'ARRÊT

EMERGENCY STOP
ARRÊT D'URGENCE

120V/240V 50/60 HZ
ELECTRIC ACTUATOR
POWER
V.C.C. ALIMENTATION
ACTEUR
ÉLECTRIQUE

WARNING
Tipover hazard.
Enclosure can
tip over resulting
in serious injury
or death.

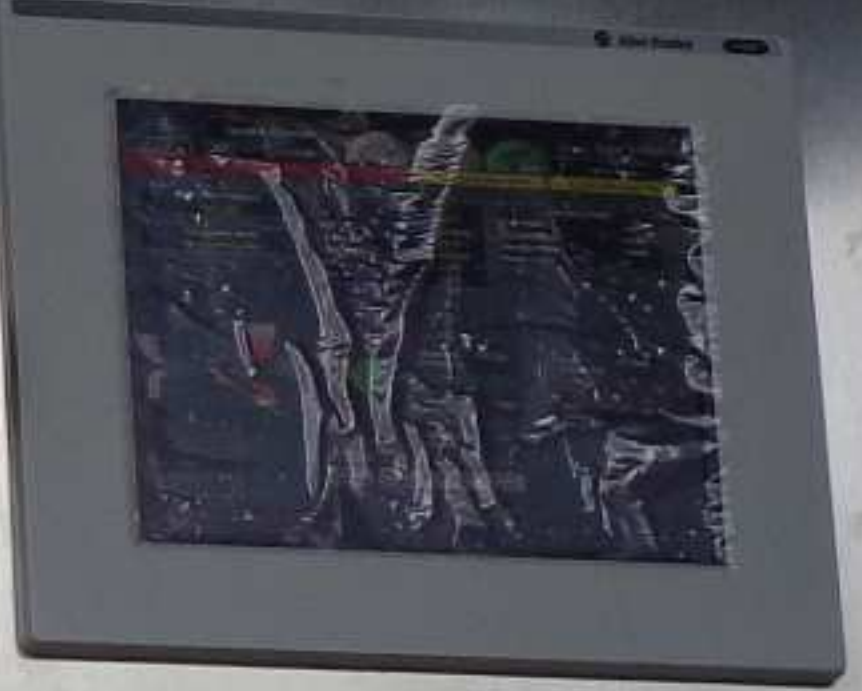
TOT-YAN
LIMITED
CM8005421
11, Citrus Meadows #6884
P.O. Box 100000 #1091
McAllen, TX 78501
1-800-451-1000
J878

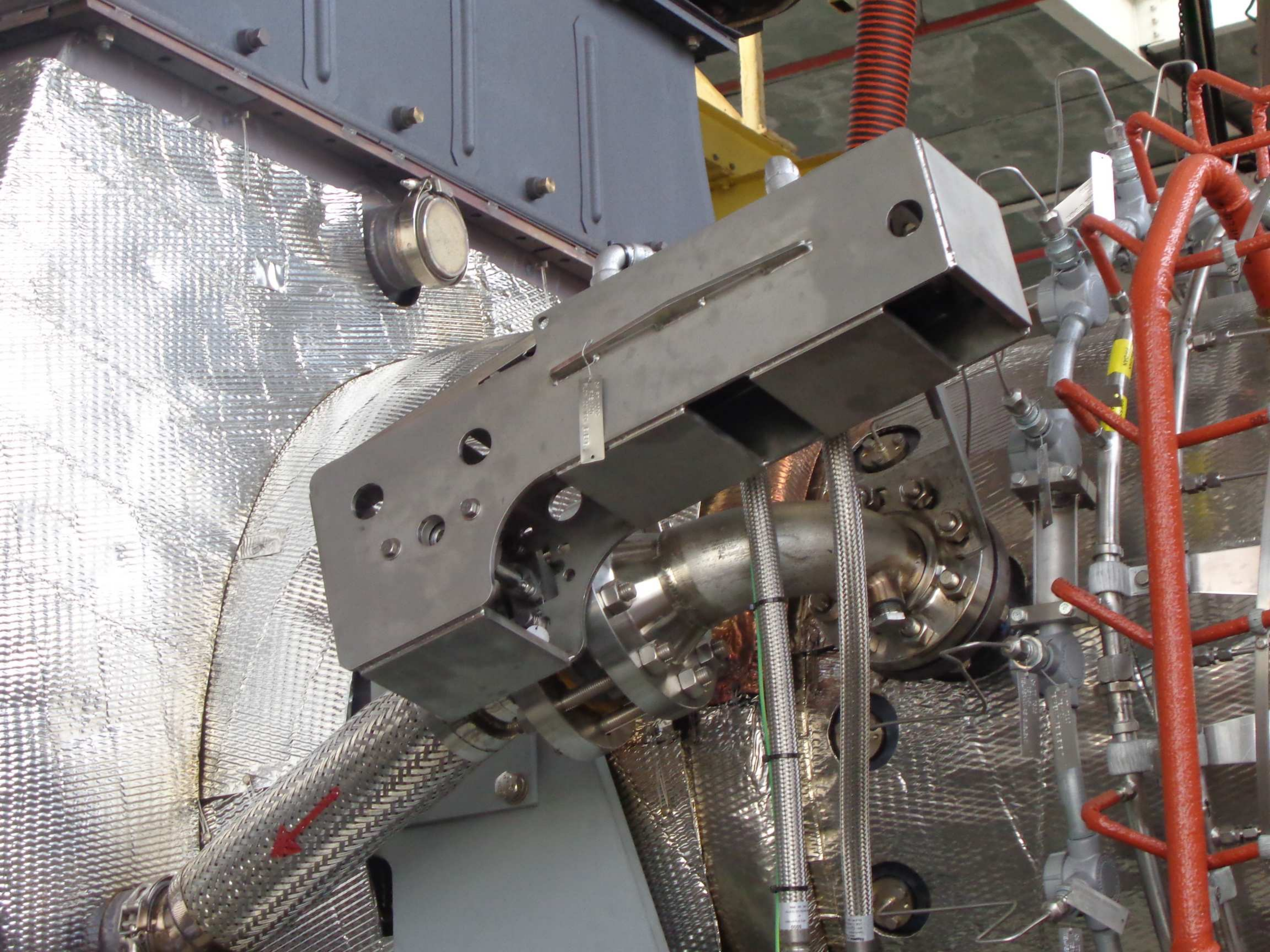
WARNING
Tipover hazard.
Enclosure can
tip over resulting
in serious injury
or death.



CAUTION
SERVICE BY AUTHORIZED
PERSONNEL ONLY.
DISCONNECT POWER
BEFORE SERVICING.

ATTENTION
ENTRÉE NE DOIT ÊTRE EFFETUÉE
UNIQUEMENT PAR LE PERSONNEL
AUTORISÉ. DÉCONNECTER
L'ALIMENTATION ÉLECTRIQUE AVANT
LE SERVICE. L'ÉLECTRICITÉ EST PRÉSENTE.





C 3000021
TE MANUEL 1 30004
PL LANCE 1 30005
ME HAF 30006
DE BRITANNY B 30007
CENTRE

Control panel with various buttons and indicators:

- STOP
- START
- RESET
- EMERGENCY STOP (Red)
- LOCAL CONTROL
- REMOTE CONTROL
- MANUAL STOP
- MANUAL START
- MANUAL RESET
- MANUAL LOCK
- MANUAL UNLOCK
- MANUAL STOP (Yellow)
- MANUAL START (Green)
- MANUAL RESET (Red)
- MANUAL LOCK (Yellow)
- MANUAL UNLOCK (Green)

Touchscreen display showing control system interface:

Control System

Local Control

Gas Production Speed	Actual	0.0%
Power Turbine Speed	Actual	0.0%
Gas Pump	Actual	0.0%

10 Temperature

Average	0.0%
Typing Gas Pump	0.0%

Fast Control

Actual	0.0%
Mean Value	0.0%
Mean Value	0.0%
Liquid	0.0%
Fast Pump	0.0%

User Defined Control Status

Speed	0.0%	0.0%
Speed	0.0%	0.0%
Speed	0.0%	0.0%
Speed	0.0%	0.0%

Storage compartment with a handle and a lock.

Row of four analog gauges.

Row of three analog gauges.

Single analog gauge labeled SLOW and FAST.

Control knobs and switches.

Emergency stop button and other controls.

CAUTION
SERVICE BY AUTHORIZED PERSONNEL ONLY. DISCONNECT POWER BEFORE SERVICING.

ATTENTION
L'ENTRETIEN DOIT ÊTRE EFFECTUÉ UNIQUEMENT PAR LE PERSONNEL AUTORISÉ. DÉCONNECTER L'ALIMENTATION ÉLECTRIQUE AVANT DE PROCÉDER À TOUTE INTERVENTION.

Coiled cables and additional controls.

Background area showing a desk with a computer monitor and other equipment.



Allen-Bradley

1500P



11/26/2013
9:57:10 AM

Solar Turbines

A Caterpillar Company

Total - Yanga

Slow_Roll_Interrupted

AL_Gas_Main_Vent_Fail

Control Mode Setup

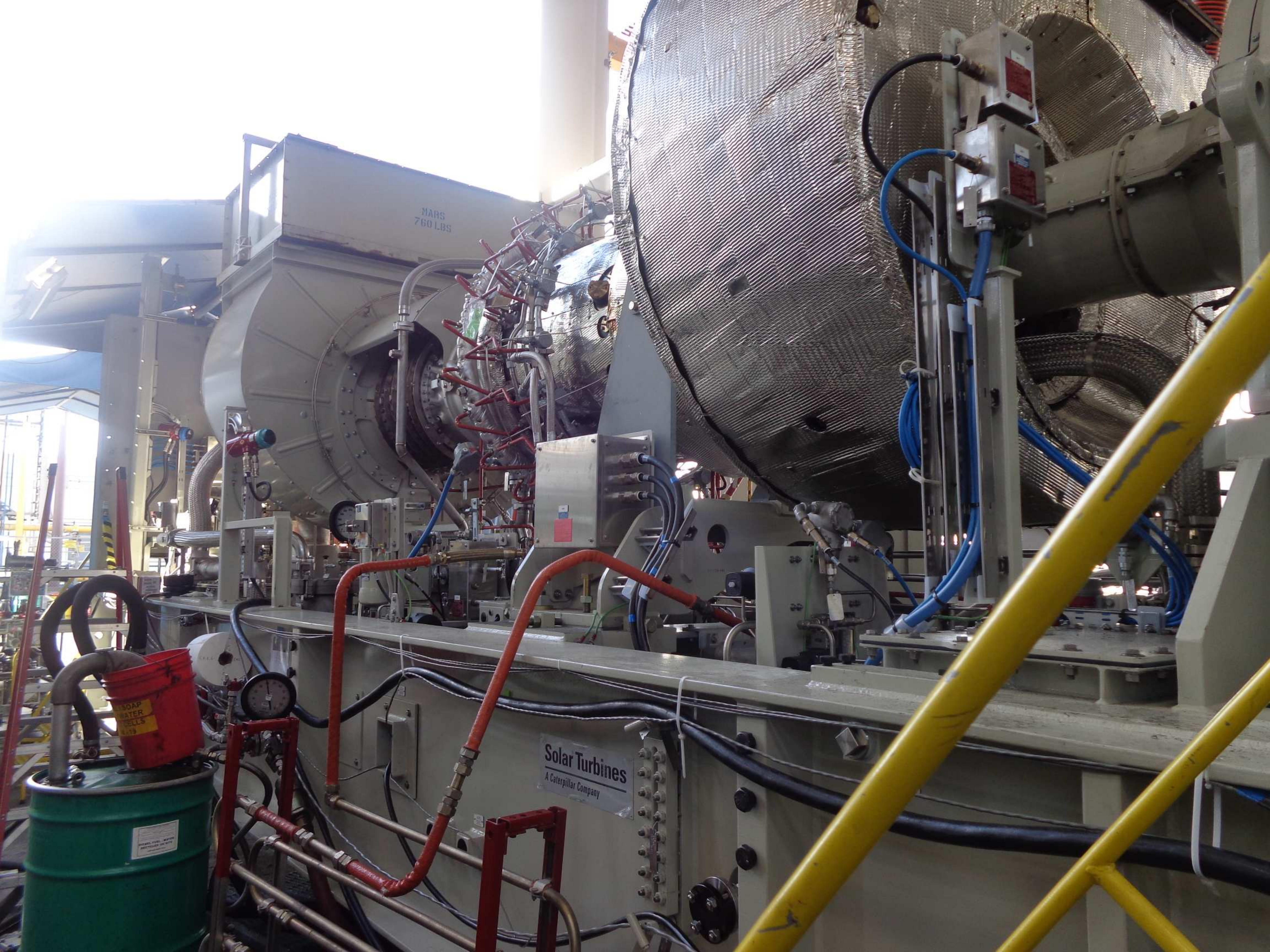
Control Mode Setup

Default

User Defined

Default Control Modes

Island Operation

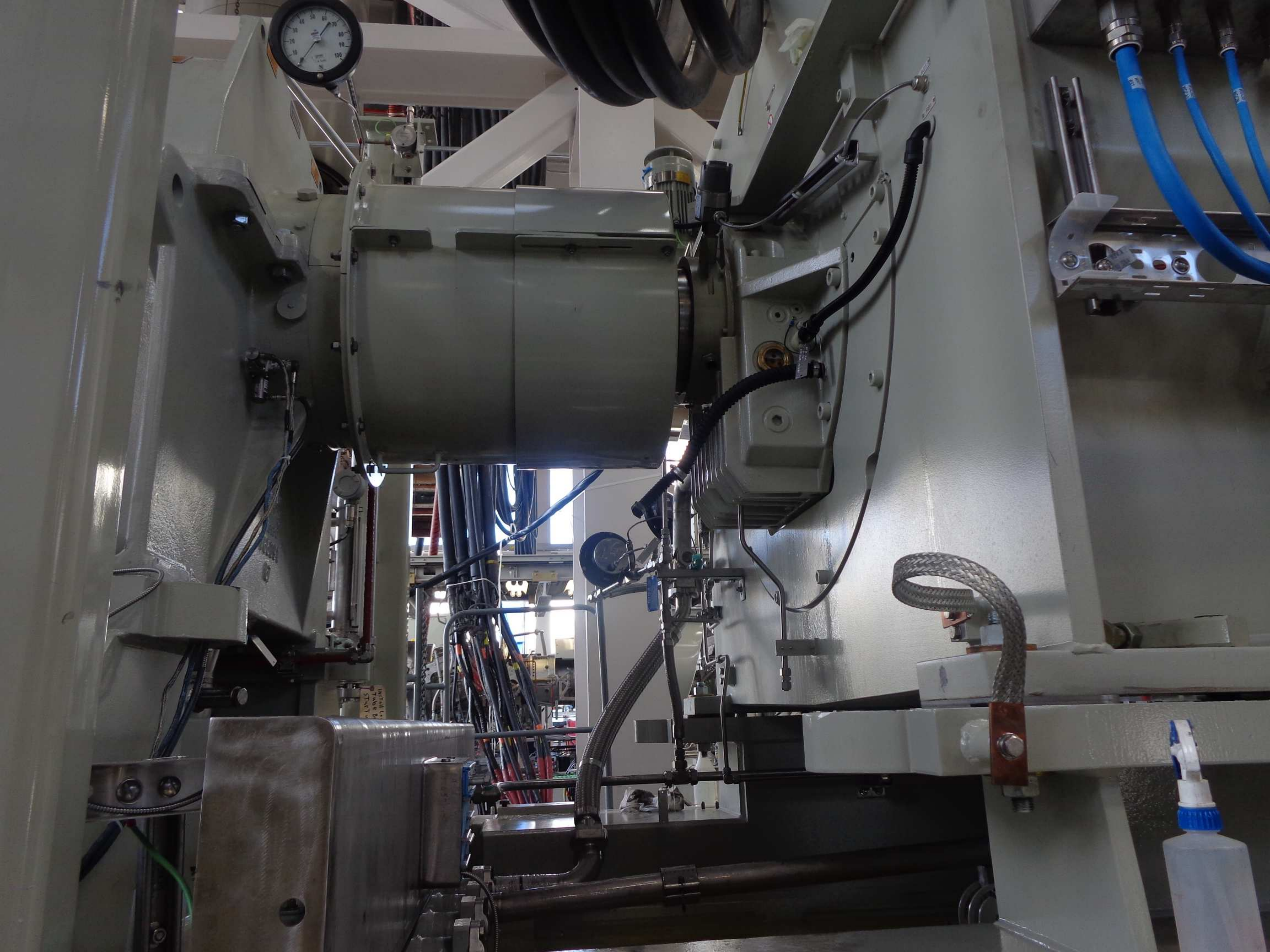


MARS
760 LBS

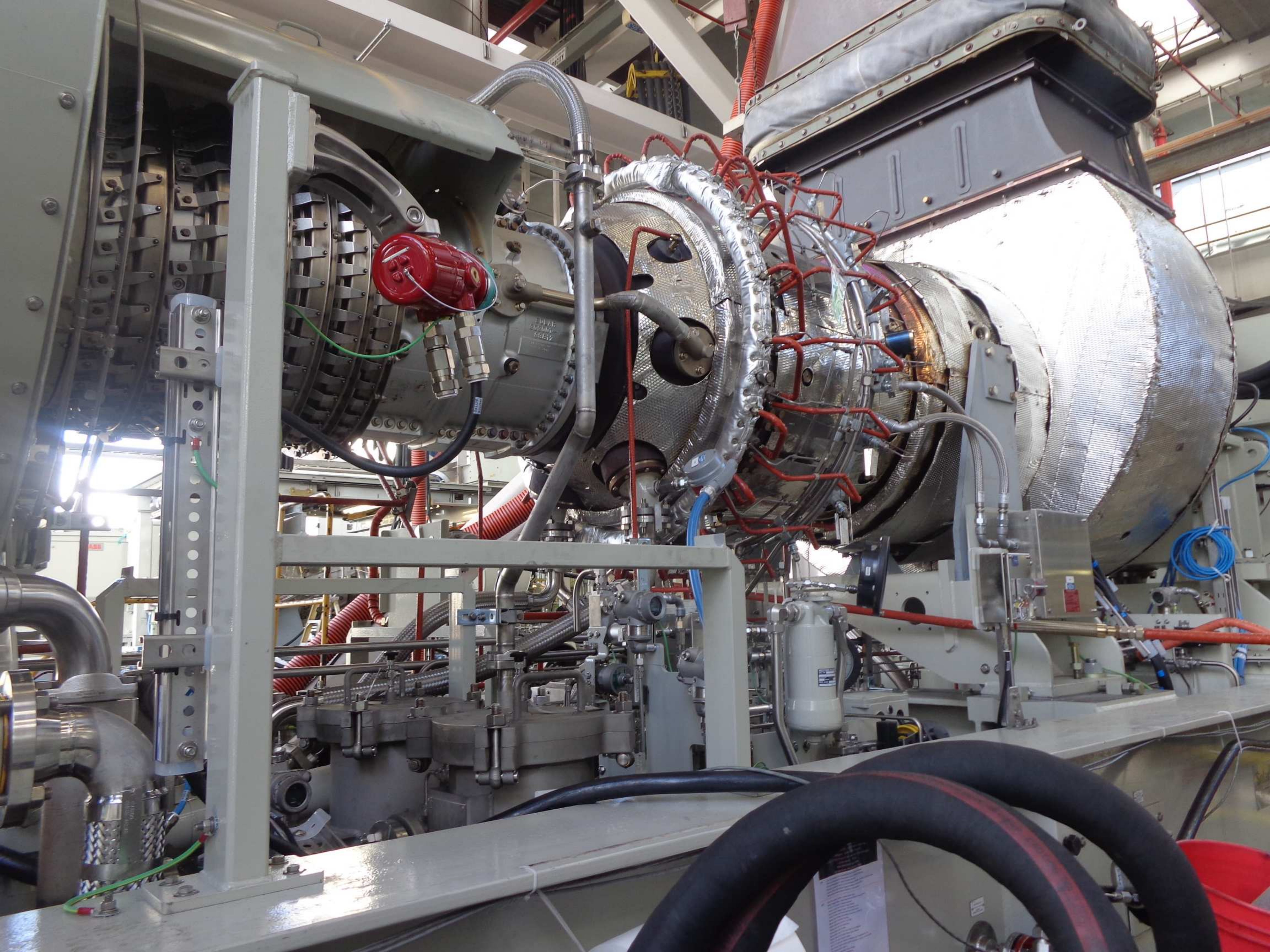
Solar Turbines
A Caterpillar Company

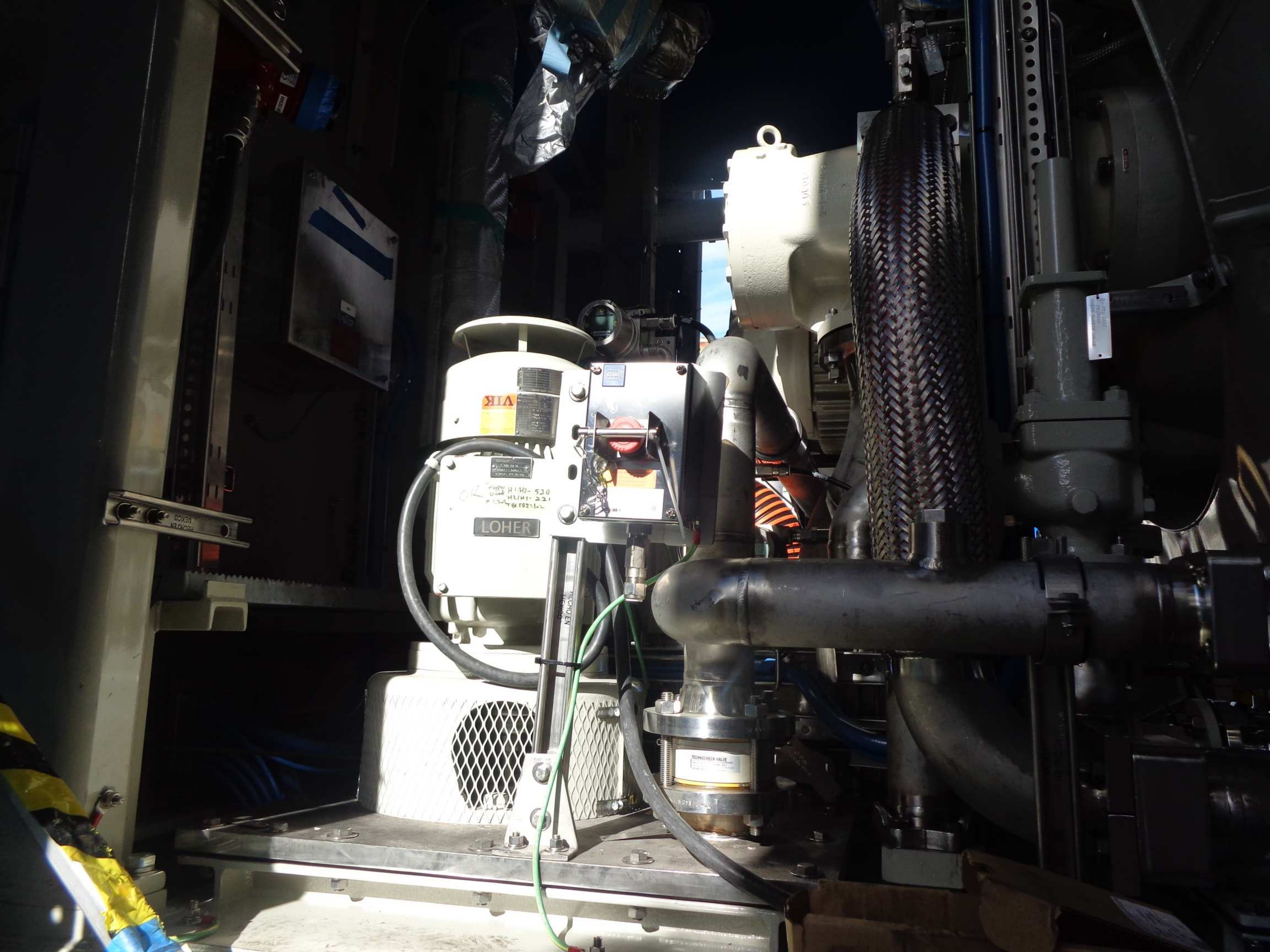
SOAP
WATER
WELLS

RECYCLED PETROL WATER
RECYCLED IN 1970









LOHER

VIA

OK
H111-52
H111-221
15-102-1-1

TECHNOCHECK VALVE

00005

00005

LOHER